

# CAPITAL GRANTS FORUM

## Clubhouses & Pavilions



ARCHITECTUREDESIGNINTERI

ORS

LONDON NOTTINGHAM MANCHESTER GLASGOW



s&p

# DESIGN INFLUENCES

Design Brief

Site

Sport England Design Guidance Notes

Pavilions & Clubhouses

Accessible Sport Facilities

Strategic Club Development

Sustainability

Inclusion

Continual Improvement



ARCHITECTUREDESIGNINTERI

ORS

LONDON NOTTINGHAM MANCHESTER GLASGOW



s&p

# DESIGN TEAM

Architect

Structural Engineer

Civil Engineer

M & E Consultant

Quantity Surveyor

CDM Coordinator

Specialist



ARCHITECTUREDESIGNINTERI

ORS

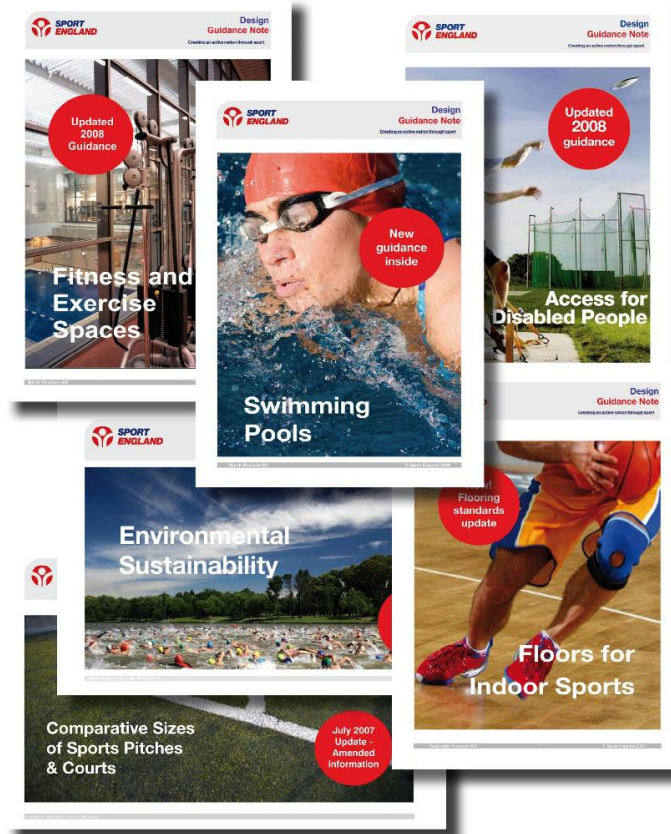
LONDON NOTTINGHAM MANCHESTER GLASGOW



s&p



# SPORT ENGLAND DESIGN GUIDANCE



SPORT ENGLAND

## SPORT ENGLAND ARCHITECTURAL DESIGN SERVICE

S&P successfully secured the opportunity to work with Sport England, and to set up and lead a specialist consortium, responsible for providing architectural design services, following their decision to outsource design services to private consultants. This project requires a number of specialists, with considerable experience in sport and leisure, working in close collaboration and consultation within the various topic areas, for the delivery of a number of design services, including:

- Updating, creating and developing existing and new design guidance notes. New and updated guidance completed to date includes: Athletics (updated); Swimming Pools (new); Floors for Indoor Sports (updated); Access for Disabled People (updated); Fitness & Exercise Spaces (new); Environmental Sustainability (new); Comparative Sizes of Sports Pitches & Courts (updated) and Designing for Sport on School Sites (new). Further design guidance is in the process of being produced.
- Production of regional good practice case study examples.

The guidance notes provide key building professions, clients, user representatives and other stakeholders with information that will assist during the procurement, design and development processes, key to successful facility design. Each document requires an in depth knowledge of the subject matter and informed consultation with governing bodies, key stakeholders and industry experts.



ARCHITECTURE DESIGN INTERIORS

ORBS

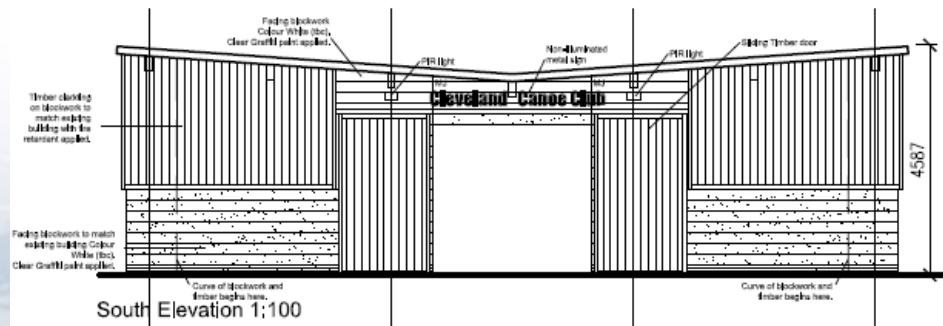
LONDON NOTTINGHAM MANCHESTER GLASGOW



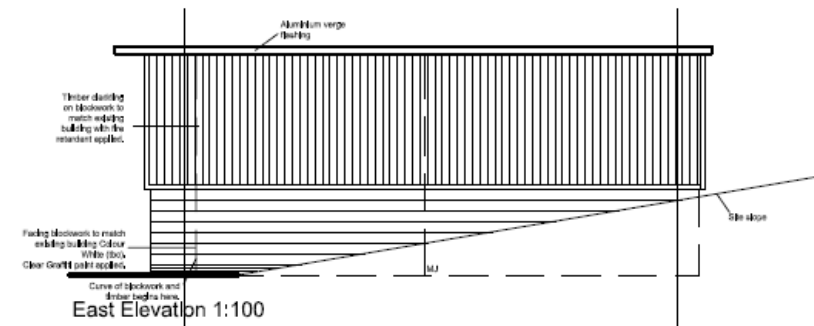
s&p

# BUDGET

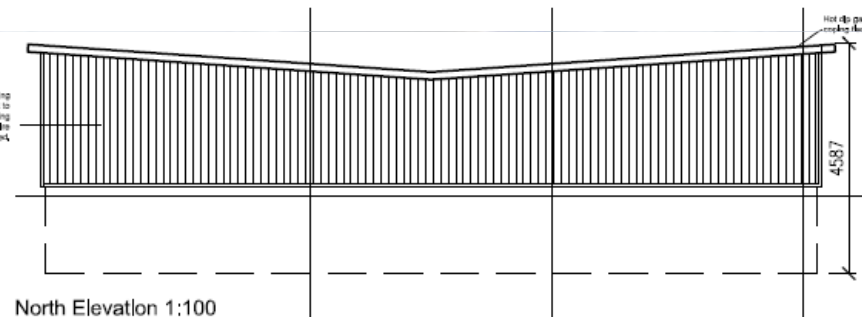
Circa £200,000 – Construction Cost



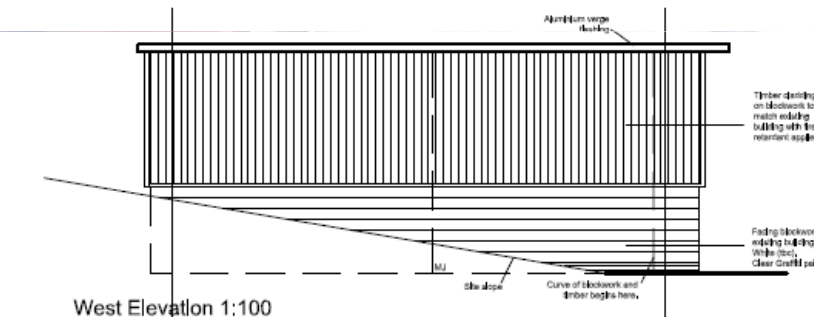
South Elevation 1:100



East Elevation 1:100



North Elevation 1:100



West Elevation 1:100

ARCHITECTUREDESIGNINTERI

ORS

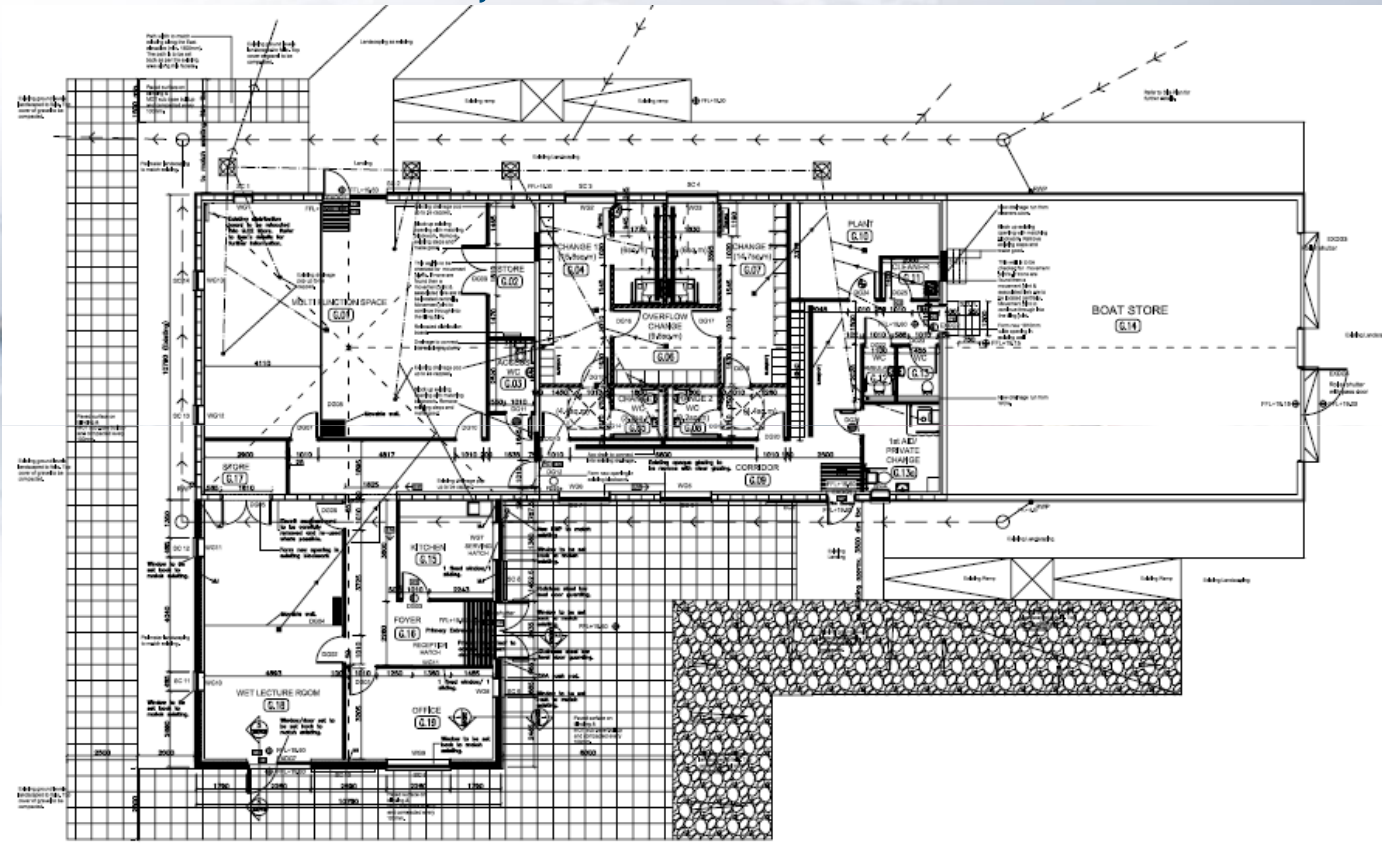
LONDON NOTTINGHAM MANCHESTER GLASGOW



s&p

# BUDGET

Circa £350,000 – Construction Cost



ARCHITECTUREDESIGNINTERI

ORS

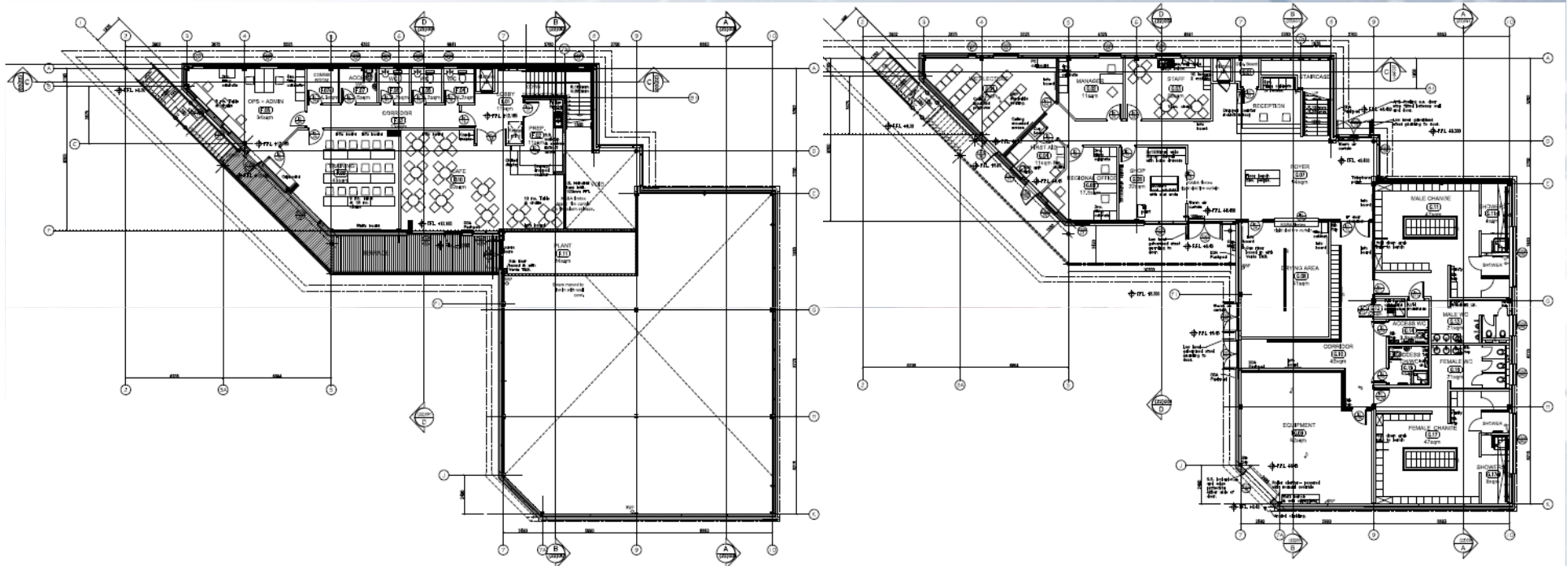
LONDON NOTTINGHAM MANCHESTER GLASGOW



s&p

# BUDGET

Circa £1,500,000 – Construction Cost



ARCHITECTUREDESIGNINTERI

ORS

LONDON NOTTINGHAM MANCHESTER GLASGOW



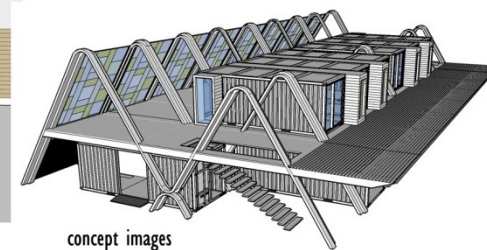
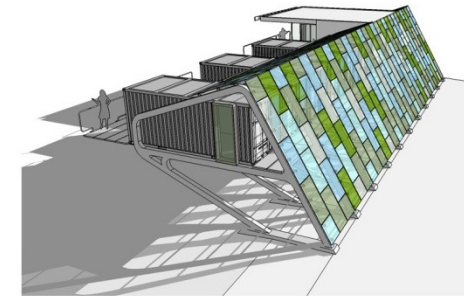
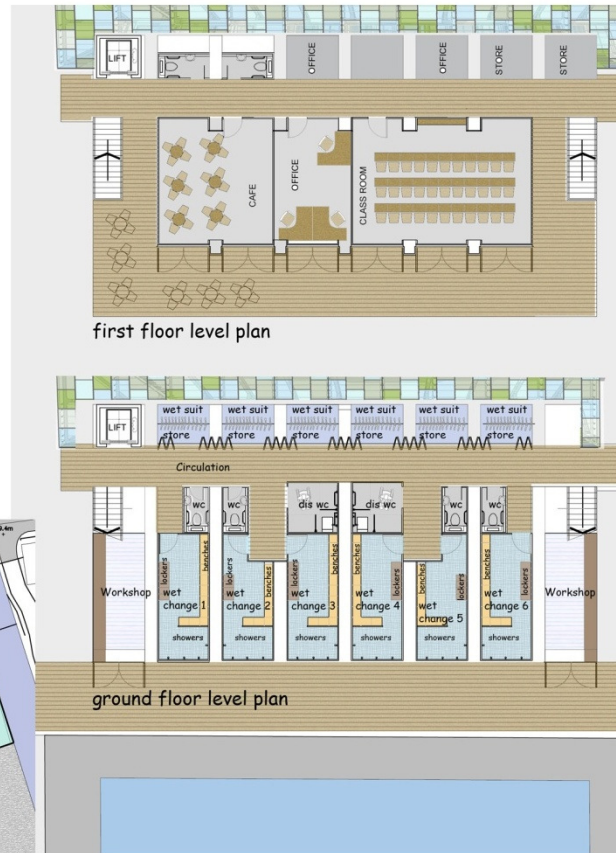
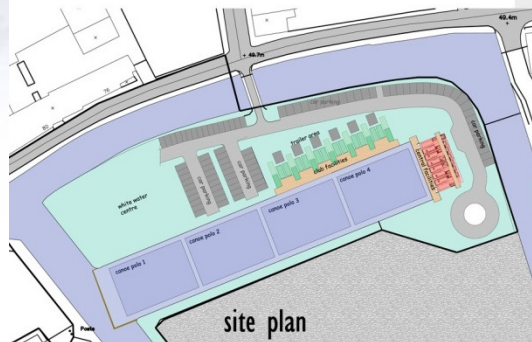
CanoeEngland  
Something for Everyone

s&p



# INNOVATION

The core building will be located at the short end of the canal looking west. It will be a 2-3 storey structure with the changing wet suit storage and workshops located at ground floor level. The class room, social/cafe area and occies will be located at first floor level. The gym if required could be located at a third floor level. The structural frame and services for the modular pods can be repeated or removed to suit the pressures for expansion or contraction. This type of structure will be simple to build as it can be substantially fabricated off site. it could come as a "kit of parts". It can be constructed with minimal excavation.



ARCHITECTUREDESIGNINTERI

ORS

LONDON NOTTINGHAM MANCHESTER GLASGOW



s&p